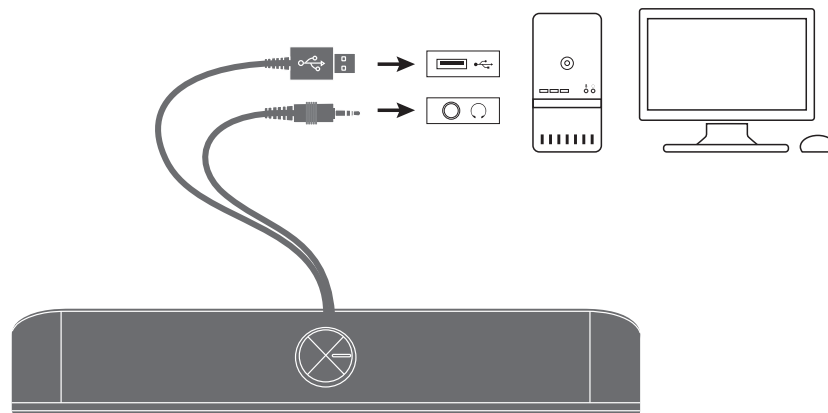


## USER MANUAL

### INSTALLATION & USE

1. Plug the USB and 3.5mm jack into the corresponding USB port and 3.5mm jack (audio) port on the PC.
2. Check your PC audio settings to ensure that the soundbar is selected as the assigned audio device.

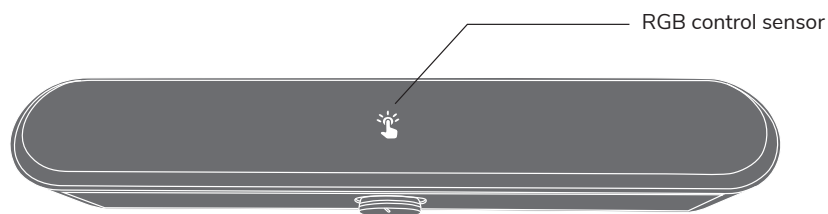


The volume control knob is used to turn the soundbar on / off and higher / lower the volume as needed.

- Off: turn the knob all the way to the left until you hear the knob click.
- On: turn the knob to the right until you hear it click or see the knob LED turn on.
- Volume control: turn the knob to the right to higher the volume and to the left to lower the volume.

### RGB LED LIGHTING SETTINGS

- Cycling
- Dynamic 7 colours
- Red
- Green
- Blue
- Off



Gently touch the RGB control sensor to adjust the LED settings.

**Note:** Please go to settings on your PC device, make sure the volume is set above 70% before using the volume control knob on the speaker.